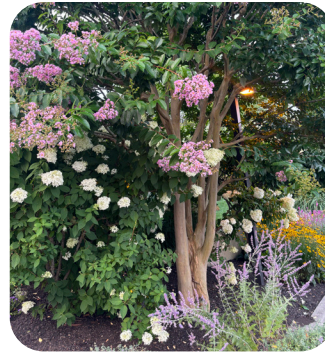
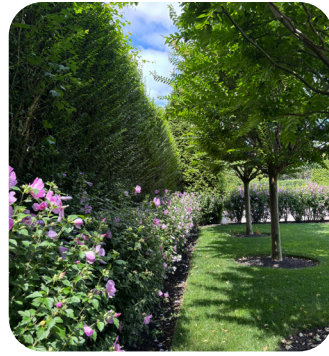
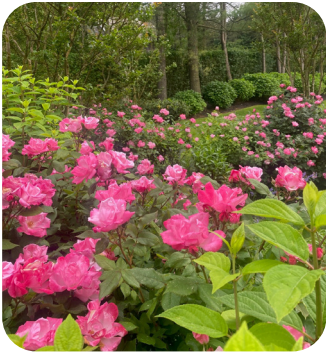


## What to Expect During the Design Process

If you want to enjoy new landscaping for Memorial Day or this summer's U.S. Open in Southampton, now is the time to design your project. Planning and procurement of plant material takes time, so the sooner you act the better. Here's what to expect during the design process.



## Collaboration begins with a conversation.

“Every client I work with has ideas of what they love, and they want to see those ideas translated through the lens of the designer,” says Mahoney Landscape Designer Drew Riley. “I always consider the architecture and what’s appropriate for the style of the home, the clients’ desires, and the location—village or woods or water, to determine what plants will work esthetically and survive in the site’s microclimates.”

## A field-verified base plan ensures accuracy.

The property’s existing survey includes elevations, which are then field measured to confirm that they’re correct. A computer-generated base plan is the foundation for future design phases.

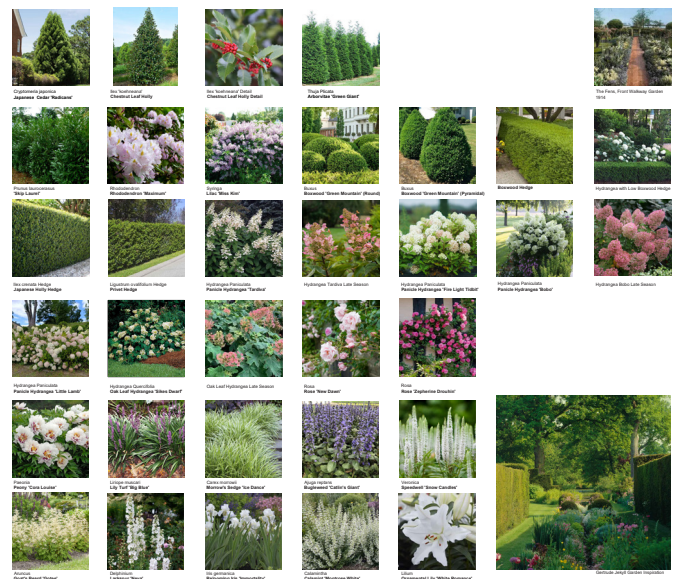
## The conceptual design phase explores solutions.

During conceptual design, spatial relationships, site circulation, and preliminary plant palettes take shape. The graphics during this phase are typically hand drawn on the CAD base map.

## Design and construction document preparation.

After your approval of the conceptual plan, we move directly into the technical design phase. The conceptual drawings are computerized so an exact plant count and hardscape material quantities can be determined for budgeting, procurement, and to guide the installation team.

This set of drawings includes the plant palette with a photograph of every recommended plant.



## The transition to installation and maintenance are seamless.

With an in-house designer, the handoff to construction is continuous with ongoing field support and frequent check-ins to make sure your design intent is achieved.

Mahoney's lifetime warranty covers all newly installed trees and shrubs. If we plant it and continuously maintain your newly installed landscape, you won't have to pay twice for your trees and shrubs—we guarantee it.

Let's make your  
Hamptons landscape  
everything you want it  
to be this summer.



Contact your account manager or **Matt Tolan** so we can reserve time in our spring schedule for your landscape design and installation.



**Matt Tolan**

[mtolan@mahoneyassociates.net](mailto:mtolan@mahoneyassociates.net)



**Michael Maskiell**

[mmaskiell@mahoneyassociates.net](mailto:mmaskiell@mahoneyassociates.net)



**Graham Lefford**

[glefford@mahoneyassociates.net](mailto:glefford@mahoneyassociates.net)